

Cylindrical Inductive Proximity Sensors



PR Series (AC 2-wire) CATALOG

For your safety, read and follow the considerations written in the instruction manual, other manuals and Autonics website.

The specifications, dimensions, etc. are subject to change without notice for product improvement. Some models may be discontinued without notice.

Major Features

- Spatter-resistant type
: PTFE coated for high heat resistance (prevent malfunction from welding spatter)
- Operation indicator (red LED)
- IP67 Protection structure (IEC standards)

Ordering Information

This is only for reference, the actual product does not support all combinations. For selecting the specified model, follow the Autonics website.

PR ① ② ③ ④ - ⑤ A ⑥

① Characteristic

No mark: General type
A: Spatter-resistant type

② Connection

No mark: Cable type
W: Cable connector type
CM: Connector type

③ Body length

No mark: Normal
L: Long

④ DIA. of sensing side

Number: DIA. of sensing side (unit: mm)

⑤ Sensing distance

Number: Sensing distance (unit: mm)

⑥ Control output

O: Normally open
C: Normally closed

Sold Separately

- Connector cable,
- connector connection cable
- Transmission coupler
- Spatter protection cover
- Fixed bracket

Specifications

Installation	Flush type		
General	PR□12-2A□	PR□18-5A□	PR□30-10A□
Spatter-resistant	PRA□12-2A□	PRA□18-5A□	PRA□30-10A□
DIA. of sensing side	Ø 12 mm	Ø 18 mm	Ø 30 mm
Sensing distance	2 mm	5 mm	10 mm
Setting distance	0 to 1.4 mm	0 to 3.5 mm	0 to 7 mm
Hysteresis	≤ 10 % of sensing distance		
Standard sensing target: iron	12 × 12 × 1 mm	18 × 18 × 1 mm	30 × 30 × 1 mm
Response frequency ⁰¹⁾	20 Hz		
Affection by temperature	≤ ± 10 % for sensing distance at ambient temperature 20 °C		
Indicator	Operation indicator (red)		
Approval	CE ENEC	CE ENEC	CE ENEC

Installation	Non-flush type		
General	PR□12-4A □	PR□18-8A □	PR□30-15A □
DIA. of sensing side	Ø 12 mm	Ø 18 mm	Ø 30 mm
Sensing distance	4 mm	8 mm	15 mm
Setting distance	0 to 2.8 mm	0 to 5.6 mm	0 to 10.5 mm
Hysteresis	≤ 10 % of sensing distance		
Standard sensing target: iron	12 × 12 × 1 mm	25 × 25 × 1 mm	45 × 45 × 1 mm
Response frequency ⁰¹⁾	20 Hz		
Affection by temperature	≤ ± 10 % for sensing distance at ambient temperature 20 °C		
Indicator	Operation indicator (red)		
Approval	CE ENEC	CE ENEC	CE ENEC

01) The response frequency is the average value. The standard sensing target is used and the width is set as 2 times of the standard sensing target, 1/2 of the sensing distance for the distance.

Unit weight (package)	Ø 12 mm	Ø 18 mm	Ø 30 mm	
Cable	Normal	≈ 72 g (≈ 84 g) ⁰¹⁾	≈ 118 g (≈ 130 g) ⁰²⁾	≈ 170 g (≈ 207 g)
	Long	-	≈ 130 g (≈ 142 g)	≈ 208 g (≈ 245 g)
Cable connector	Normal	≈ 42 g (≈ 54 g)	≈ 66 g (≈ 78 g)	≈ 122 g (≈ 134 g)
	Long	-	≈ 78 g (≈ 90 g)	≈ 158 g (≈ 195 g)
Connector	Normal	≈ 30 g (≈ 42 g)	≈ 54 g (≈ 66 g)	≈ 142 g (≈ 154 g)
	Long	-	≈ 66 g (≈ 78 g)	≈ 182 g (≈ 194 g)

01) Spatter-resistant type: ≈ 66 g (≈ 78 g)

02) Spatter-resistant type: ≈ 106 g (≈ 118 g)

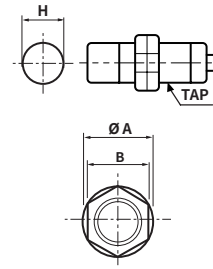
Power supply	100 - 240 VAC ~ 50 / 60 Hz, operating voltage: 85 - 264 VAC ~
Leakage current	≤ 2.5 mA
Control output	DIA. of sensing side Ø 12 mm: 5 to 150 mA DIA. of sensing side Ø 18 mm, Ø 30 mm: 5 to 200 mA
Residual voltage	≤ 10 V
Protection circuit	Surge protection circuit
Insulation resistance	≥ 50 MΩ (500 VDC = megger)
Insulation type	Double insulation or reinforced insulation (symbol: □) dielectric strength between the measuring input part and the power part: general type 1 kV, spatter-resistant type 1.5 kV
Dielectric strength	General type : 2,500 VAC ~ 50/60 Hz for 1 min (between all terminals and case) Spatter-resistant type : 1,500 VAC ~ 50/60 Hz for 1 min (between all terminals and case)
Vibration	1 mm double amplitude at frequency 10 to 55 Hz (for 1 min) in each X, Y, Z direction for 2 hours
Shock	500 m/s ² (≈ 50 G) in each X, Y, Z direction for 3 times
Ambient temperature	-25 to 70 °C, storage: -30 to 80 °C (no freezing or condensation)
Ambient humidity	35 to 95 %RH, storage: 35 to 95 %RH (no freezing or condensation)
Protection structure	IP67 (IEC standards)
Connection	Cable type / Cable connector type ⁰¹⁾ / Connector type ⁰¹⁾ model
Cable spec. ⁰²⁾	DIA. of sensing side Ø 12 mm: Ø 4 mm, 2-wire DIA. of sensing side Ø 18 mm, Ø 30 mm: Ø 5 mm, 2-wire
Wire spec.	AWG 22 (0.08 mm, 60-core), insulator diameter: Ø 1.25 mm
Connector spec.	M12 connector
Material	Standard type cable (black): polyvinyl chloride (PVC)
General	Case/Nut: nickel plated brass, washer: nickel plated iron, sensing side: PBT
Spatter-resistant	Case/Nut: PTFE coated brass, washer: PTFE coated iron, sensing side: PTFE

01) Except spatter-resistant type

02) Cable type: 2 m, cable connector type: 300 mm

Cut-out Dimensions

• Unit: mm, For the detailed drawings, follow the Autonics website.



	Ø 12 mm	Ø 18 mm	Ø 30 mm
Mounting hole (H)	Ø 12.5 ^{+0.5} ₀	Ø 18.5 ^{+0.5} ₀	Ø 30.5 ^{+0.5} ₀
TAP	M12×1	M18×1	M30×1.5

	Ø 12 mm	Ø 18 mm	Ø 30 mm
Ø A	21	29	42
B	17	24	35